



THE TOWN OF
Corte Madera
California

Corte Madera Adapts - Hillside Community Summary

Wildfire poses a significant risk to Corte Madera due to several factors: the Town's climate, topography, and long dry summers; the current and historic fire-suppression policy in the United States; population growth in the Wildland Urban Interface (WUI); and, climate change. The Town is on the National Fire Plan list as a community at high risk of damage from wildfire. Across the State, fire risk can be extreme (on March 22, 2019, Governor Newsom declared a state of emergency for wildfire in California) and a significant portion of the Town lies directly within the WUI (evacuation routes are limited, can be steep, and pose significant access challenges for emergency responders). In addition, a considerable number of homes in the Town do not meet minimal standards for fire protection and safety. The story of wildfire is a regional one and adaptation will require regional understanding, planning, and partnerships.

How is climate change exacerbating wildfire risk?

- Recent studies suggest that climate change has rendered the concept of a "fire season" in California obsolete: major wildfires can happen at any time throughout the year and areas previously considered to be low-risk can experience major wildfire damage (CalFire Plan, 2018).
- Fire activity in the Bay Area is projected to increase in a warmer climate, especially in the Wildland Urban Interface (CA 4th Assessment Report, 2018).
- Across the state of California, there has been an increase in the number of fire ignitions, area burned, and the damages and impacts to humans and ecosystems (CalFire Plan, 2018).

What does this mean for Corte Madera?

- Larger, more frequent, and more intense fire events are very likely.
- Significant risk to our property, health, air quality, economy, livelihoods, natural resources, and water supply.

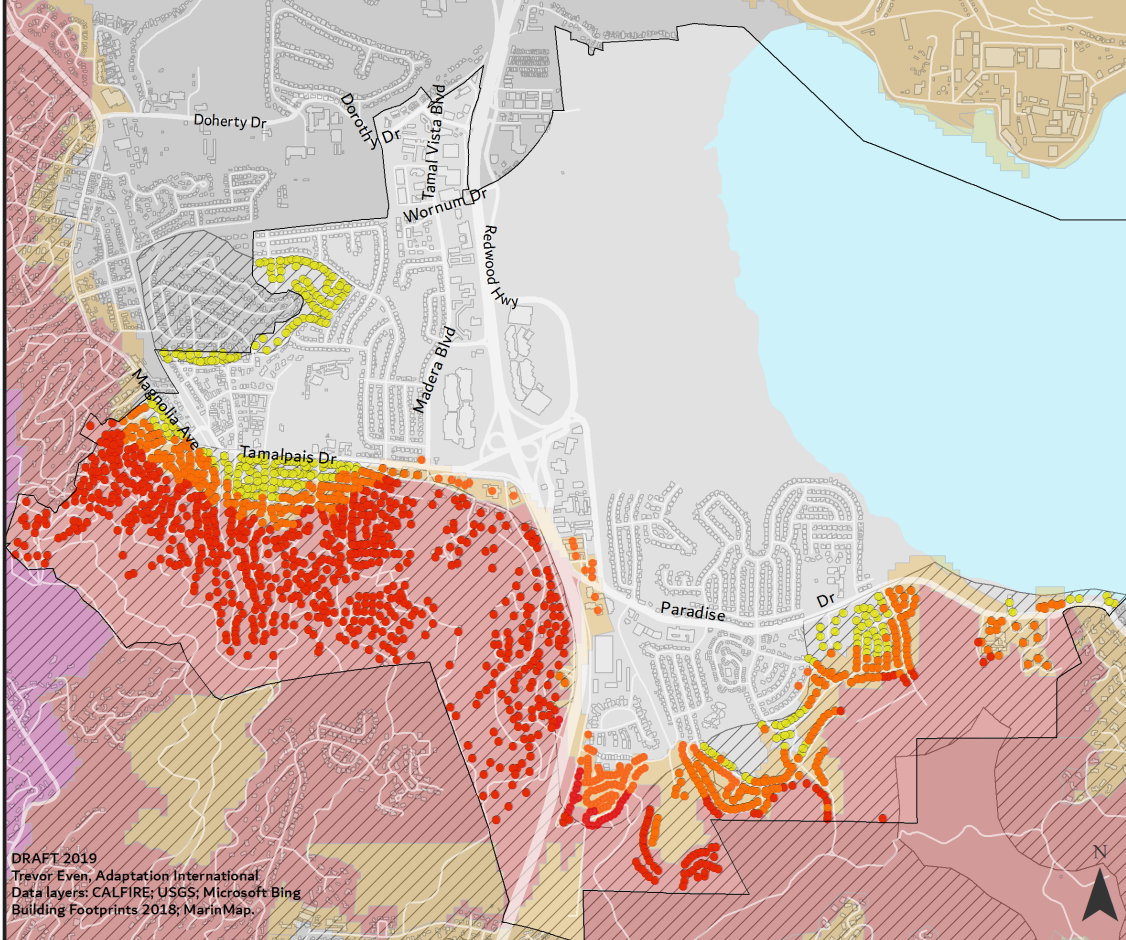
Why should we care?

- Wildfires are dangerous, deadly, and expensive.
- In the Town of Corte Madera, our homes and land are valuable. Currently, 846 buildings are located in a CalFire 'High Risk' fire zone, and 468 are located in a 'Moderate' zone (CalFire Plan, 2018). Catastrophic wildfires can decrease property and land values.
- The impacts of wildfire last long after the actual fire event. Our water supply, sourced from the Mount Tamalpais Watershed, lies in a 'Moderate' to 'Very High' fire risk zone. Silting, erosion, and landslides are more common after wildfires and can impact water quality and quantity.
- Marin County is home to 17 fauna species and 20 flora species considered endangered, threatened, or rare.

What fire protection assets do we have currently?

- Residents must abide by Town and County fire codes and regulations (based off of the International WUI codes): any new proposed structure must be built to code (fire resistant roofing, enclosed eaves, double-paned windows, etc.); and, new homes and subdivisions must accommodate fire apparatus road access among others.
- Six fire detection cameras located on Mt. Tamalpais, Mt. Barnabe, Big Rock, and Point Reyes monitored by the Marin County Fire Department in Woodacre with real-time images available to the public.
- The Corte Madera Fire Department has 26 full-time personnel, two fire stations, three Type-1 fire apparatus, two ambulances, two command vehicles, and three utility vehicles.
- FireSafe Marin and community information and education programs such as FIREWISE, and Ready, Set, Go! are designed to encourage fire-safe practices.

Corte Madera Buildings in CALFIRE Fire Hazard Zones and Marin County WUI Zones



Legend

- Building in CALFIRE High Fire Hazard Zone (846)
- Building in CALFIRE Moderate Fire Hazard Zone (468)
- Building in Marin Co. WUI Ordinance Zone (1,479)

CAL FIRE Hazard Severity Classification Zones

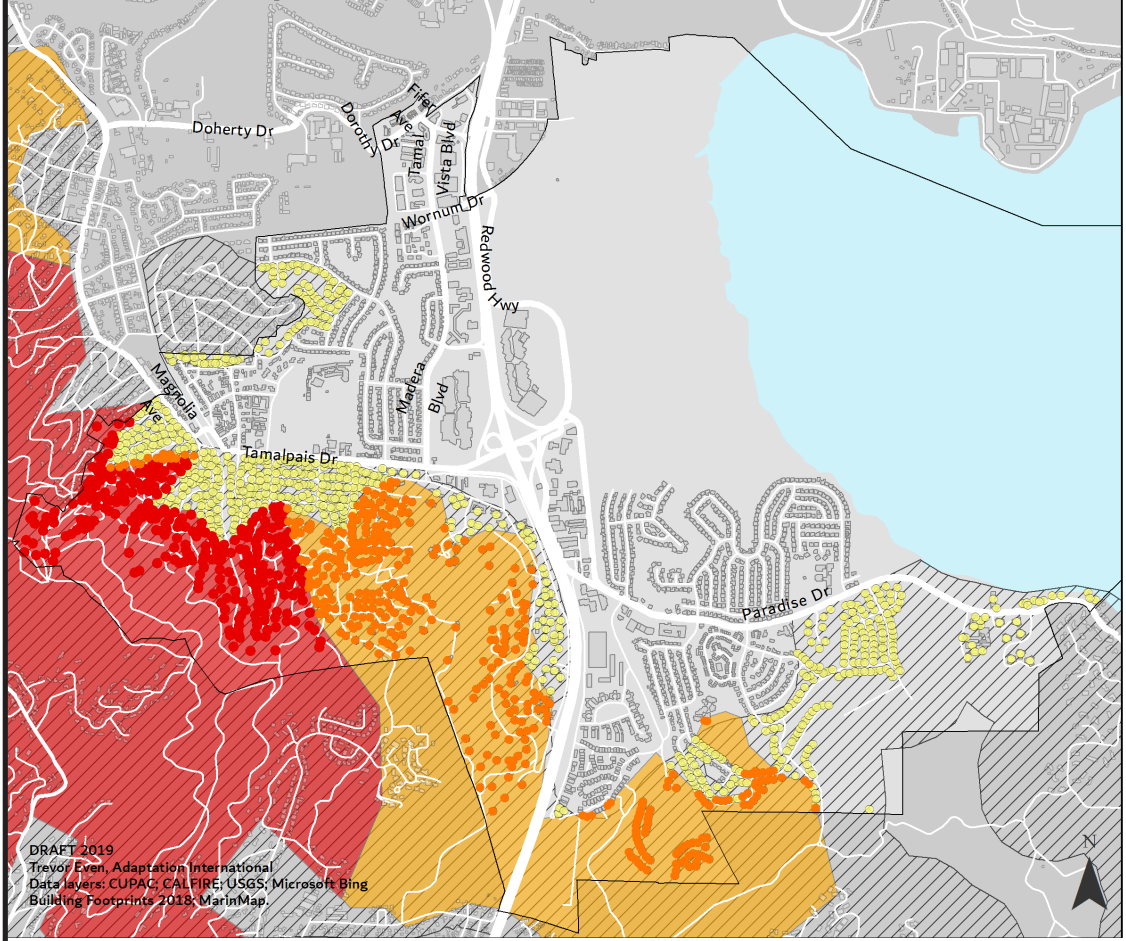
- Moderate
- High
- Very High

▨ Marin County WUI Ordinance Zones

0 0.2 0.4 Miles

DRAFT 2019
 Trevor Even, Adaptation International
 Data layers: CALFIRE; USGS; Microsoft Bing
 Building Footprints 2018; MarinMap.

Corte Madera Buildings in PG&E Tier 2 & 3 Hazard Zones and Marin County WUI Zones



Legend

- Buildings in PG&E Hazard Tier 2 (415)
- Buildings in PG&E Hazard Tier 3 (296)
- Building in Marin Co. WUI Ordinance Zone (1,479)

■ PG&E Hazard Zone Tier 2

■ PG&E Hazard Zone Tier 3

▨ Marin County WUI Ordinance Zones

0 0.2 0.4 Miles

DRAFT 2019
 Trevor Even, Adaptation International
 Data layers: CUPAC; CALFIRE; USGS; Microsoft Bing
 Building Footprints 2018; MarinMap.