



Corte Madera | Shoreline Adaptation Community Engagement

King Tide Pop Up Events Summary

Location: Sanitary Pump Station (Golden Hind Passage and Ebbitide Passage, Mariner Cove) and Marina Village Levee (end of Echo Avenue, Marina Village)

Date and Time: January 10, 2024 at 9:30 - 11:00 am

Attendance: Mariner Cove Sanitary Pump Station: 45 | Marina Village Levee: 25

On January 10, 2024, the Town of Corte Madera and consultant team staff held pop ups during King Tide (approximately 6.9 feet) at the Sanitary Pump Station in Mariner Cove and at the Marina Village levee. The intention was to 1) meet residents in an area that regularly experiences flooding to have informal conversations about their experience and concerns ; 2) share information about flood risk; 3) share information about the Shoreline Adaptation Community Engagement process.

SUMMARY OF FEEDBACK RECEIVED

The following is a summary of the comments received from pop-up participants, organized by location.

At both locations the following feedback was received about outreach methods:

- Participants felt well informed by A-frames and postcards
- Participants encouraged the Town to go door to door to talk to residents along Harbor and Golden Hind and the edge of San Clemente Creek
- Participants appreciated this event and the opportunity to discuss issues, concerns, and potential solutions with Town Staff and fellow residents, as well as clarify goals/process of this engagement effort

Marina Village

Concerns

- Several participants were concerned about the impact of built flood mitigation infrastructure on views and property values
- Existing flood experiences along San Clemente Creek and Channel Dr & Harbor

Opportunities

- Appreciation expressed for the Town's transparency and clear communication regarding options, impacts and cost associated with mitigation strategies
- Support for the Town evaluating modest & incremental flood protection measures that allow for short and long term protection against existing and future flood risk including:
 - maintenance of the existing berm
 - potential creation of new infrastructure



Mariner Cove

Concerns

- Impact of raised berms with trails on privacy especially behind Golden Hind
- Existing flood management infrastructure (storm drains) need maintenance and upgrades (strip drains, larger catch basins, pumps)
- More information needed to better understand different flood mitigation strategies
- Existing flood experiences at Seawolf & Golden Hind, Spindrift and Seawolf, Harbor, and Estrada:
 - Example from participant in Pop Up: since 1993, no tidal incursion onto property, but in 2022, entire backyard under standing water from heavy rain

Opportunities

- Support for the Town to evaluate near term and implementable flood mitigation strategies as a development of the long-range planning in the Climate Adaptation Assessment
- Support for the Town to consider a “phased approach” with respect to timing and implementation area (for example, starting with specific mitigation measures for areas most at risk, and/or considering different flood barrier heights based on site specific needs)
- Appreciation expressed that the Town’s efforts are not driven by Caltrans



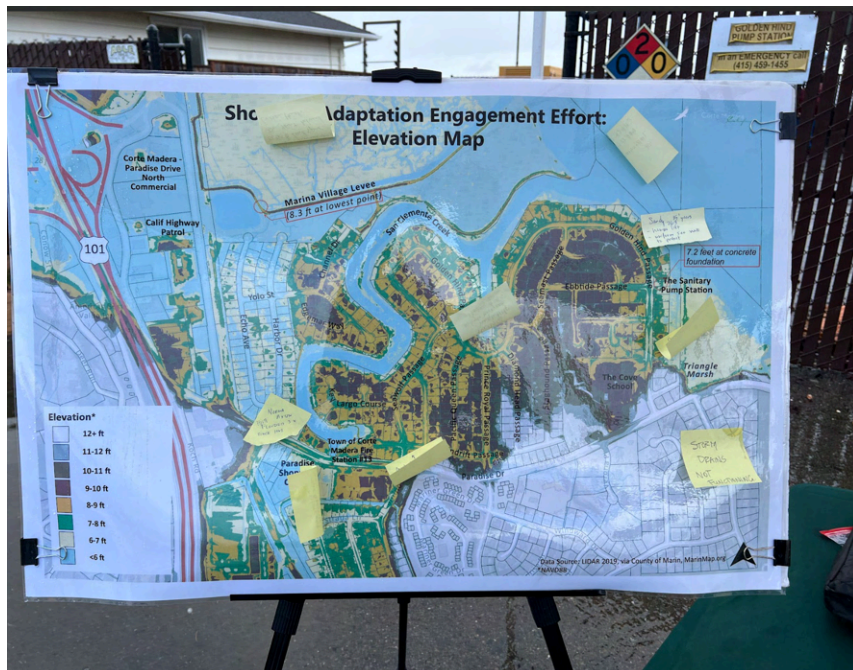
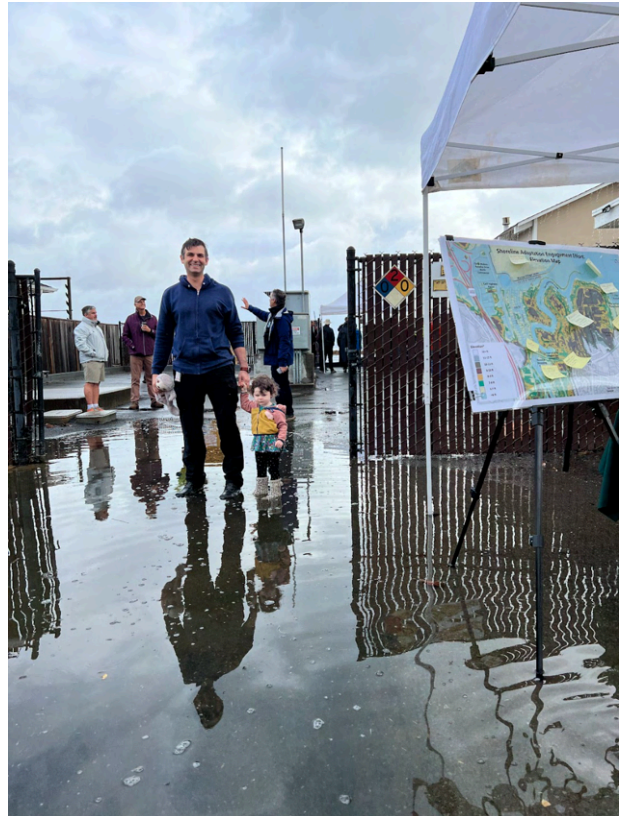
Photos from Marina Cove Sanitary Pump Station:

Below: Community members gathered at partially-flooded Pump Station, in conversation with Town Staff





Photos from Marina Cove Sanitary Pump Station:
Below: Elevation Map with comments from the community



Photos from Marina Cove Sanitary Pump Station:

Below: Flood Board Vice Chair Nathan Blomgren with elevations of FEMA base flood elevation, the highest observed tide, the NOAA 1 in 100 year tide, and survey elevations





Photos from Marina Village Levee

Community members and staff gathered at the levee with Town Staff to observe the King Tide, gather and share information about elevations and flood risks

